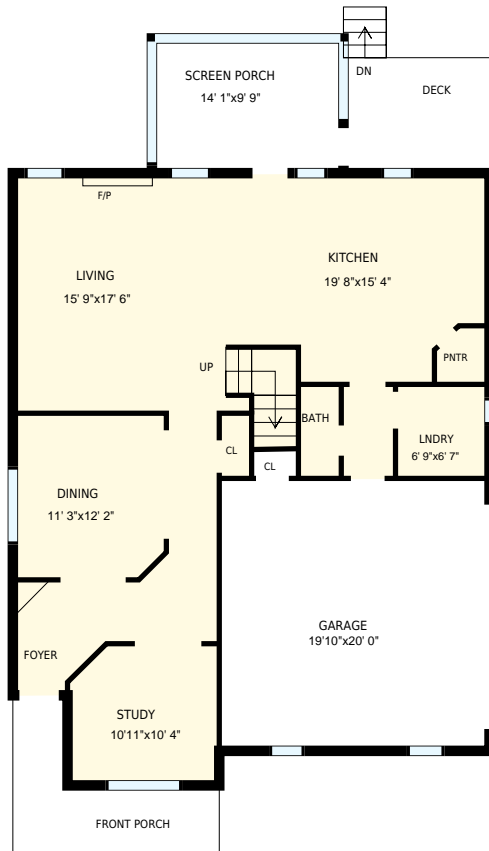


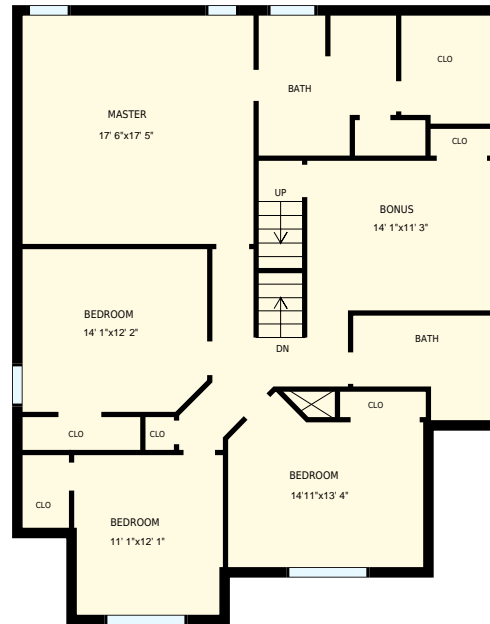


203 Ashdown Forest Ln, Cary, NC

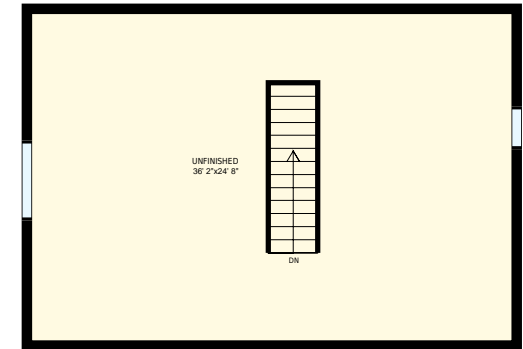
Total Exterior Area Above Grade 3653 sq. ft.



1st Floor
Exterior Area 1176 sq. ft.



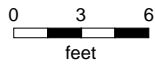
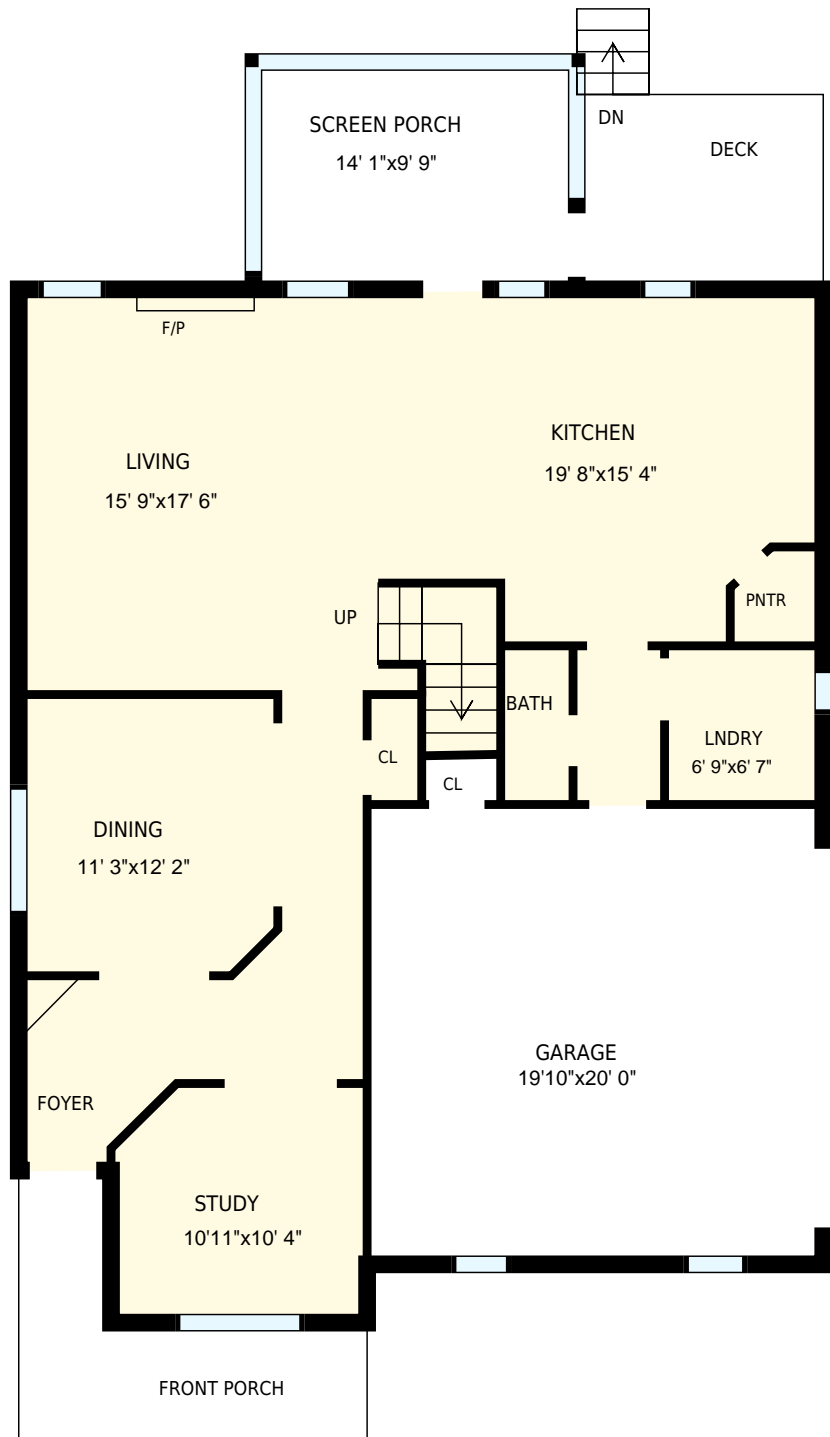
2nd Floor
Exterior Area 1527 sq. ft.



3rd Floor
Exterior Area 950 sq. ft.

Colored regions are included in total floor area. All room dimensions and floor areas must be considered approximate and are subject to independent verification. For method of measurement please see <https://youriguide.com/measure/>.

PREPARED FOR:



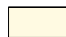
203 Ashdown Forest Ln, Cary, NC

1st Floor

PREPARED FOR:

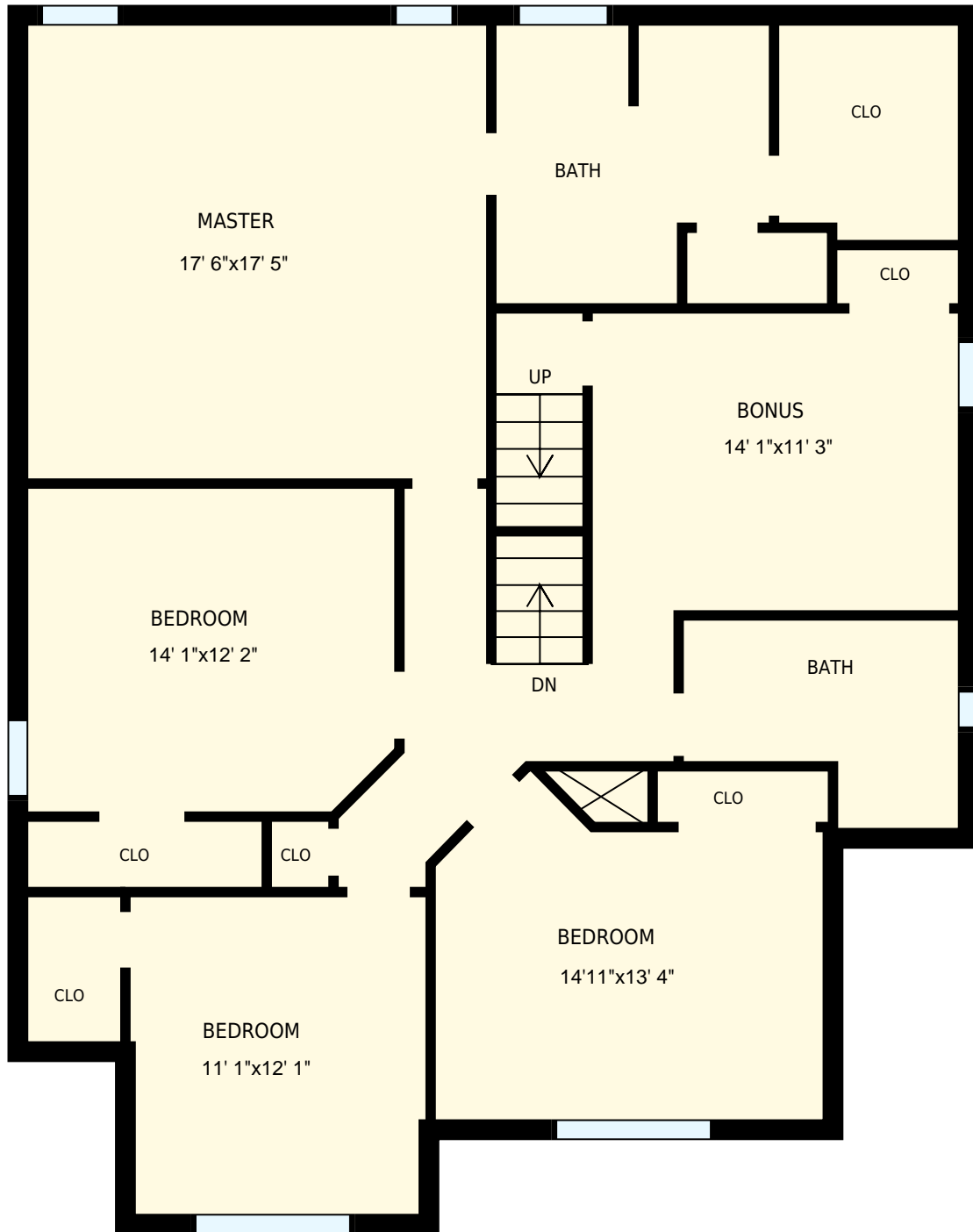
Interior Area
Exterior Area

1105 sq. ft.
1176 sq. ft.

 Included Area

PREPARED:
Oct, 2017

Colored regions are included in total floor area. All room dimensions and floor areas must be considered approximate and are subject to independent verification. For method of measurement please see <https://youriguide.com/measure/>.

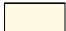


203 Ashdown Forest Ln, Cary, NC

PREPARED FOR:

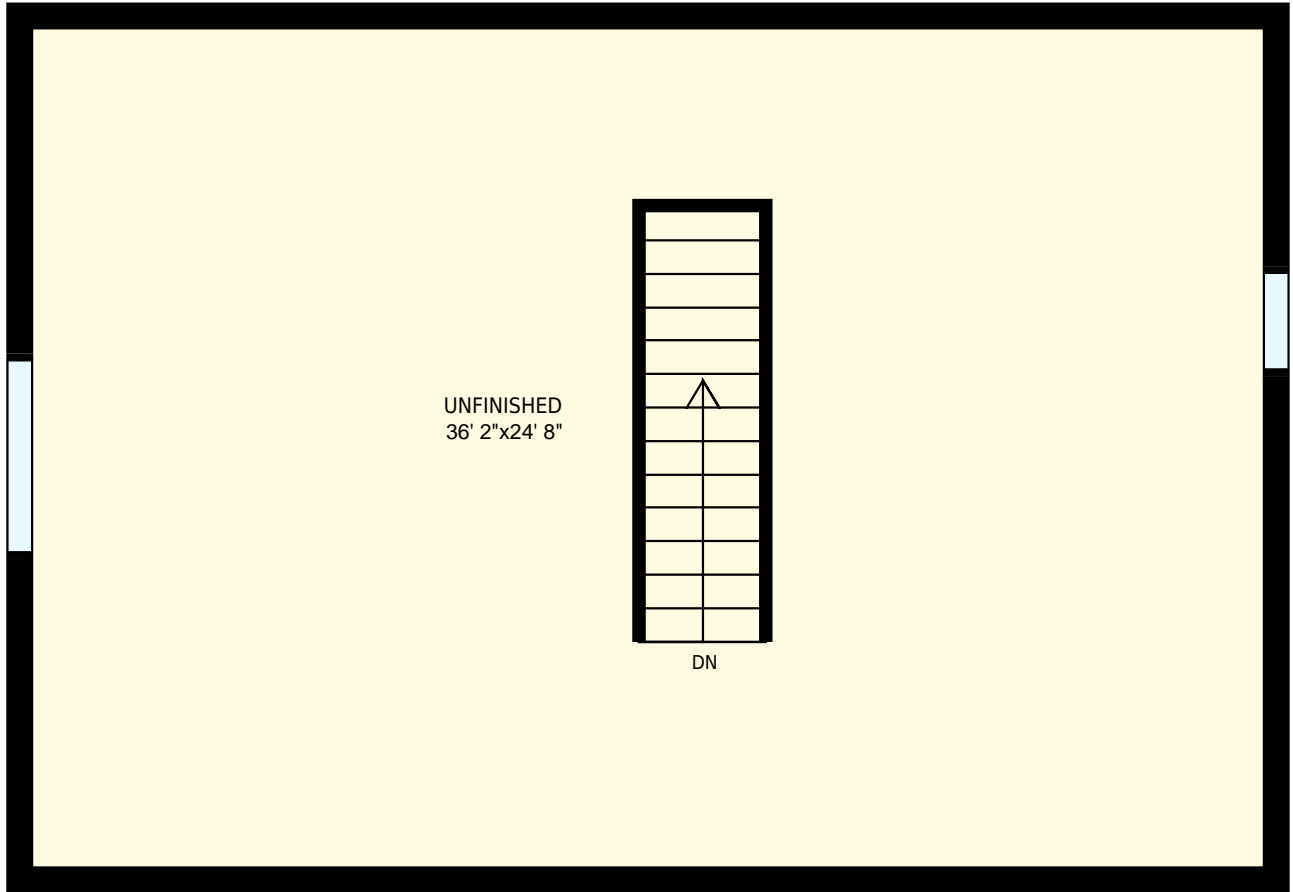
2nd Floor

Interior Area 1457 sq. ft.
 Exterior Area 1527 sq. ft.

 Included Area

PREPARED:
 Oct, 2017

Colored regions are included in total floor area. All room dimensions and floor areas must be considered approximate and are subject to independent verification. For method of measurement please see <https://youriguide.com/measure/>.

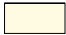


203 Ashdown Forest Ln, Cary, NC

PREPARED FOR:

3rd Floor

Interior Area 898 sq. ft.
Exterior Area 950 sq. ft.

 Included Area

PREPARED:
Oct, 2017

Colored regions are included in total floor area. All room dimensions and floor areas must be considered approximate and are subject to independent verification. For method of measurement please see <https://youriguide.com/measure/>.